

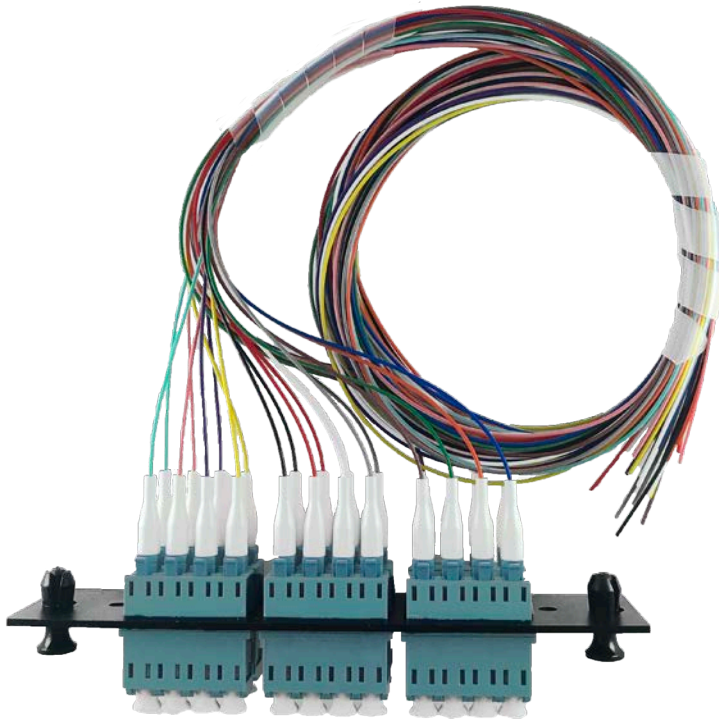


Pre-Loaded LGX Adapter Plate

Easy Strip Fiber Ready for Splice

Multimode Series

These pre-terminated Easy Strip adapter panels provide convenience to technicians splicing into fiber distribution frames. Adapter panels are LGX compatible and can be ordered in a black color. Available in 6 or 12 fiber bundles and color coded to TIA-598-A industry standards, these fiber bundles provide cable management from patch panels to splice bays.



IFP - LGX - I2350 - 24G - 9EZ - 1M

Multimode Series Ordering Information

IFP	LGX	I2350 Fiber Glass	12 Fiber Glass	C Connector	9 Fiber	EZ Application	1M Length
	LGX = LGX Footprint	I1611 = 62.5µm OM1 I2350 = 50µm OM3 I2550 = 50µm OM4	6 = 6 Fiber 12 = 12 Fiber 24 = 24 Fiber* <small>*Only available for LC</small>	A = ST C = SC G = LC	9 = 900µm	EZ = Easy Strip	1M = 1 Meter 2M = 2 Meters 3M = 3 Meters
IFP - LGX - I2350 - 12C - 9EZ - 1M SC, MM 12-Fiber 1 Meter 50µm OM3 Easy Strip Micro-core aqua jacket with 900µm leads with adapter plate.							

www.iFiberOptix.com

Delivering Tomorrow's Cabling Solutions Today