

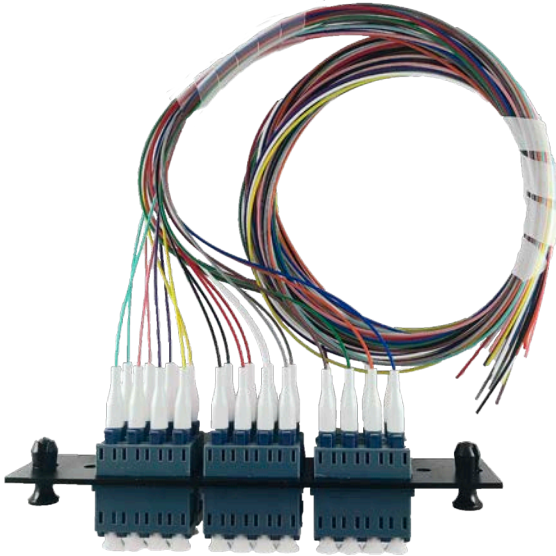


Pre-Loaded LGX Adapter Plate

Easy Strip Fiber Ready for Splice

Single Mode Series

These pre-terminated Easy Strip adapter panels provide convenience to technicians splicing into fiber distribution frames. Adapter panels are LGX compatible and can be ordered in a black color. Available in 6 or 12 fiber bundles and color coded to TIA-598-A industry standards, these fiber bundles provide cable management from patch panels to splice bays.



IFP - LGX - I2753 - 24A - 9EZ - 1M

Single Mode I2750 Series Ordering Information

IFP	LGX	I2750 Fiber Glass	12 Fiber Glass	F Connector	9 Fiber	EZ Application	1M Length
	LGX = LGX Footprint	I2750 = SM 8.33µm	6 = 6 Fiber 12 = 12 Fiber	F = SC T = SC/APC	9 = 900µm	EZ = Easy Strip	1M = 1 Meter 2M = 2 Meters 3M = 3 Meters
IFP - LGX - I2750 - 12F - 9EZ - 1M SC, SM 12-Fiber 1 Meter 8.33µm Easy Strip Micro-core yellow jacket with 900µm leads with adapter plate.							

Single Mode I2753 Series Ordering Information

IFP	LGX	I2753 Fiber Glass	12 Fiber Glass	A Connector	9 Fiber	EZ Application	1M Length
	LGX = LGX Footprint	I2753 = SM 8.33µm	6 = 6 Fiber 12 = 12 Fiber 24 = 24 Fiber	A = LC LL = LC/APC	9 = 900µm	EZ = Easy Strip	1M = 1 Meter 2M = 2 Meters 3M = 3 Meters
IFP - LGX - I2753 - 12A - 9EZ - 1M LC, SM 12-Fiber 1 Meter 8.33µm Easy Strip Micro-core yellow jacket with 900µm leads with adapter plate.							

www.iFiberOptix.com

Delivering Tomorrow's Cabling Solutions Today